

St-Mathurin / Saumur

La Vélo Francette: Normandy / Atlantic by bike



Départ
Saint-Rémy-la-Varenne

Arrivée
Saumur

Durée
2 h 01 min

Distance
29,09 Km

Niveau
I begin / Family

Thématique
Au fil de l'eau, Castles

This stage is shared by La Vélo Francette and the Loire à Vélo. Two options: either follow the route from Gennes along the Loire's south bank up to Saint-Hilaire-St-Florent (on the western side of Saumur town); or cross the bridge at Gennes and follow the alternative route along the north bank of the Loire to Saumur. Whichever way you opt for, the waterside stretches passing Loire flora, fauna and traditional boats are glorious.

Cycle route

Follow the Loire à Vélo signs.

Along the Loire's south bank, you share the way with traffic, going via Saint-Mathurin-sur-Loire, Saint-Rémy-la-Varenne, Gennes, Chênehutte-Trèves-Cunault, Saint-Hilaire-St-Florent and southern Saumur.

Alternative route

Along the Loire's north bank, the track is mainly not tarmacked and not suitable for bikes pulling trailers (there are some very narrow sections). Some stretches are cobbled, going along former Loire quays. This route is traffic-free between Les Rosiers-sur-Loire and St-Martin-de-la-Place. Between St-Martin-de-la-Place and northern Saumur, this route goes along the base of the Loire levée along the D 952 road, on a surface that has been adapted for motorized traffic.

Tourist Offices

- [Loire Authion Tourist Office](#)
- [Loire-Longué Tourist Office](#)
- [Saumur Val de Loire Tourist Office](#)

SNCF train services

Angers and Saumur train stations: TGV high-speed services and TER regional services, line 5 Nantes > Angers > Tours > Orléans

St-Mathurin-sur-Loire and Les Rosiers-sur-Loire train stations: TER regional services, line 19 Angers > Saumur > Tours

www.ter.sncf.com/pays-de-la-loire

Don't miss

Saint-Mathurin-sur-Loire: classic or themed river cruises on board a traditional river boat with Loire de lumière

St-Rémy-la-Varenne: former Benedictine priory, founded in 926, being gradually restored by an association

St-Maur: the Benedictine abbey in this riverside village also has Dark Ages roots, but the fine building beside the Loire dates from the Ancien Régime. Not open to visitors.

Le Thoureil : charming riverside village with an historic Loire port where traditional river boats are being revived

Gennes: vestiges of a Gallo-Roman amphitheatre; panorama over the Loire Valley from the church of St-Eusèbe, with a memorial to young officers of the Saumur cavalry school who fought bravely against the German invaders in 1940

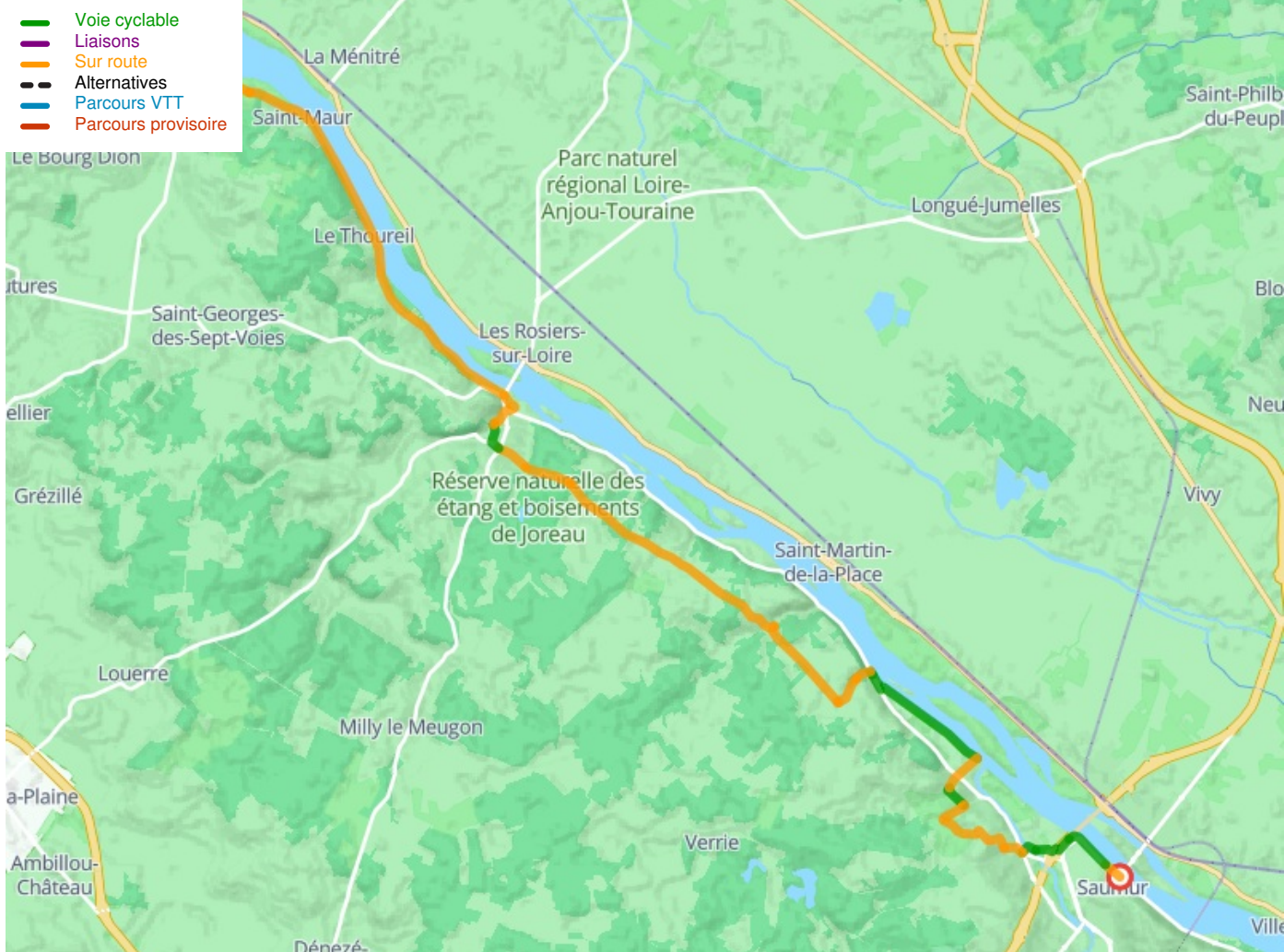
Cunault: collegiate church of Notre-Dame de Cunault, one of the finest Romanesque edifices in Anjou

Trèves: pretty Romanesque church and a keep, a remnant of a 15th-century castle

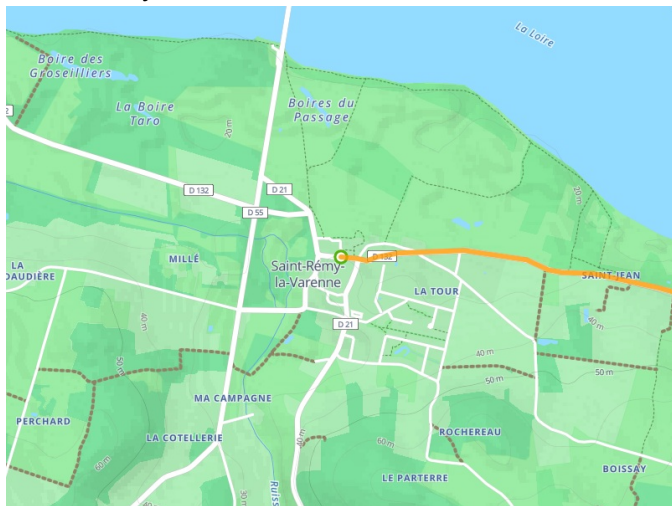
Chênehutte: priory church

Saint-Hilaire-St-Florent: [the Cadre Noir elite riding corps at the École Nationale d'Équitation](#), France's most prestigious cavalry riding school, open to the public; mushroom-growing

caves; spectacular underground wine cellars open to visitors, notably those of the Saumur sparkling wine houses
Les Rosiers-sur-Loire: bell-tower that can be climbed (see Office de tourisme); zen fountain; historic quays and docks beside the Loire, powerful reminders of the major river-trading that went on along the great river through Anjou.



Départ
Saint-Rémy-la-Varenne



Arrivée
Saumur

